



MRF

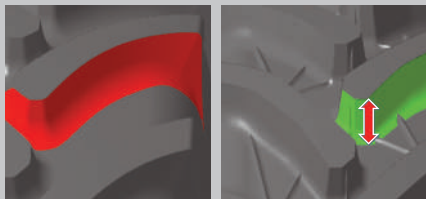
AGRICULTURE TYRES





MRF FARM MUSCLE

FEATURES & BENEFITS



High NSD tread pattern design for excellent tyre life, higher traction and better fuel economy.



Provides superior grip across terrains with its optimized multi-angled lug design. **Multi-angled lugs** provide lesser wear rates and comfortable ride on roads.



Excellent self-cleaning properties as a result of rightly placed mud ejectors.

TECHNICAL DETAILS

Size	Rim	Dimension		Static Loaded Radius (mm)	Rolling Circumference (mm)	Load index / PR	Inflation Pressure (bar)	Recommended Load (Kg)						
		OD (mm)	SW (mm)					Tractor Application						
								Static kmph	10 kmph	25 kmph	30 kmph	40 kmph	50 kmph	65 kmph
320 /70R24	W9 X 24	1094	319	490	3282	116D	0.8	1840	1200	948	920	876	840	800
	W10 X 24						1.2	2358	1538	1215	1179	1122	1076	1025
	W11 X 24						1.4	2616	1706	1348	1308	1246	1194	1138
							1.6	2875	1875	1481	1438	1369	1313	1250
360/70R24	W10 X 24	1152	357	513	3456	122D	0.8	2208	1440	1138	1104	1051	1008	960
	W11 X 24						1.2	2829	1845	1458	1415	1347	1292	1230
	W12 X 24						1.4	3140	2048	1618	1570	1495	1433	1365
							1.6	3450	2250	1778	1725	1643	1575	1500
380/70R24	W11 X 24	1190	380	529	3570	125D	0.8	2429	1584	1251	1214	1156	1109	1056
	W12 X 24						1.2	3112	2030	1603	1556	1482	1421	1353
	W13 X 24						1.4	3453	2252	1779	1727	1644	1577	1502
							1.6	3795	2475	1955	1898	1807	1733	1650
420/70R24	W12 X 24	1248	418	552	3744	130D	0.8	2797	1824	1441	1398	1332	1277	1216
	W13 X 24						1.2	3583	2337	1846	1792	1706	1636	1558
	W14L X 24						1.4	3977	2594	2049	1988	1893	1815	1729
							1.6	4370	2850	2252	2185	2081	1995	1900
480/70R24	W14L X 24	1316	479	580	3948	138D	0.8	3474	2266	1790	1737	1654	1586	1510.4
	W15L X 24						1.2	4451	2903	2293	2225	2119	2032	1935
	W16L X 24						1.4	4939	3221	2545	2470	2352	2255	2148
							1.6	5428	3540	2797	2714	2584	2478	2360
280/85R24	W9 X 24	1086	282	487	3258	115D	0.8	1788	1166	921	894	851	816	778
	W10 X 24						1.2	2291	1494	1181	1146	1091	1046	996
							1.4	2543	1658	1310	1271	1211	1161	1106
							1.6	2795	1823	1440	1397	1330	1276	1215
320/85R24	W9 X 24	1154	329	514	3462	122D	0.8	2208	1440	1138	1104	1051	1008	960
	W10 X 24						1.2	2829	1845	1458	1415	1347	1292	1230
	W11 X 24						1.4	3140	2048	1618	1570	1495	1433	1365
							1.6	3450	2250	1778	1725	1643	1575	1500
340/85R24	W11 X 24	1188	353	528	3564	125D	0.8	2429	1584	1251	1214	1156	1109	1056
	W12 X 24						1.2	3112	2030	1603	1556	1482	1421	1353
							1.4	3453	2252	1779	1727	1644	1577	1502
							1.6	3795	2475	1955	1898	1807	1733	1650
380/85R24	W11 X 24	1256	380	556	3768	131D	0.8	2870	1872	1479	1435	1367	1310	1248
	W12 X 24						1.2	3678	2399	1895	1839	1751	1679	1599
	W13 X 24						1.4	4081	2662	2103	2041	1943	1863	1775
							1.6	4485	2925	2311	2243	2135	2048	1950
420/85R24	W13 X 24	1324	438	583	3972	137D	0.8	3386	2208	1744	1693	1612	1546	1472
	W14L X 24						1.2	4338	2829	2235	2169	2065	1980	1886
	W15L X 24						1.4	4814	3140	2480	2407	2292	2198	2093
							1.6	5290	3450	2726	2645	2519	2415	2300
380/70R28	W11 X 28	1293	380	578	3879	127D	0.8	2576	1680	1327	1288	1226	1176	1120
	W12 X 28						1.2	3301	2153	1700	1650	1571	1507	1435
	W13 X 28						1.4	3663	2389	1887	1831	1744	1672	1593
							1.6	4025	2625	2074	2013	1916	1838	1750

TECHNICAL DETAILS

Size	Rim	Dimension		Static Loaded Radius (mm)	Rolling Circumference (mm)	Load index / PR	Inflation Pressure (bar)	Recommended Load (Kg)						
		OD (mm)	SW (mm)					Tractor Application						
								Static kmph	10 kmph	25 kmph	30 kmph	40 kmph	50 kmph	65 kmph
420/70R28	W12 X 28	1349	418	601	4047	133D	0.8	3032	1978	1562	1516	1444	1384	1318
	W13 X 28						1.2	3885	2534	2002	1943	1850	1774	1689
	W14L X 28						1.4	4312	2812	2221	2156	2053	1968	1875
							1.6	4738	3090	2441	2369	2256	2163	2060
480/70R28	W14L X 28	1421	479	630	4263	140D	0.8	3680	2400	1896	1840	1752	1680	1600
	W15L X 28						1.2	4715	3075	2429	2358	2245	2153	2050
	W16L X 28						1.4	5233	3413	2696	2616	2491	2389	2275
							1.6	5750	3750	2963	2875	2738	2625	2500
280/85R28	W9 X 28	1187	292	535	3561	118D	0.8	1943	1267	1001	972	925	887	845
	W10 X 28						1.2	2490	1624	1283	1245	1185	1137	1082
							1.4	2763	1802	1423	1381	1315	1261	1201
							1.6	3036	1980	1564	1518	1445	1386	1320
320/85R28	W9 X 28	1255	329	563	3765	124D	0.8	2355	1536	1213	1178	1121	1075	1024
	W10 X 28						1.2	3018	1968	1555	1509	1437	1378	1312
	W11 X 28						1.4	3349	2184	1725	1674	1594	1529	1456
							1.6	3680	2400	1896	1840	1752	1680	1600
340/85R28	W11 X 28	1289	353	577	3867	127D	0.8	2576	1680	1327	1288	1226	1176	1120
	W12 X 28						1.2	3301	2153	1700	1650	1571	1507	1435
							1.4	3663	2389	1887	1831	1744	1672	1593
							1.6	4025	2625	2074	2013	1916	1838	1750
380/85R28	W11 X 28	1357	380	604	4071	133D	0.8	3032	1978	1562	1516	1444	1384	1318
	W12 X 28						1.2	3885	2534	2002	1943	1850	1774	1689
	W13 X 28						1.4	4312	2812	2221	2156	2053	1968	1875
							1.6	4738	3090	2441	2369	2256	2163	2060
420/85R28	W13 X 28	1425	438	632	4275	139D	0.8	3577	2333	1843	1788	1703	1633	1555
	W14L X 28						1.2	4583	2989	2361	2291	2182	2092	1993
	W15L X 28						1.4	5086	3317	2620	2543	2421	2322	2211
							1.6	5589	3645	2880	2795	2661	2552	2430
420/70R30	W12 X 30	1398	418	625	4194	134D	0.8	3121	2035	1608	1560	1486	1425	1357
	W13 X 30						1.2	3998	2608	2060	1999	1904	1825	1738
	W14L X 30						1.4	4437	2894	2286	2219	2112	2026	1929
							1.6	4876	3180	2512	2438	2321	2226	2120
480/70R30	W14L X 30	1478	479	657	4434	141D	0.8	3790	2472	1953	1895	1805	1730	1648
	W15L X 30						1.2	4856	3167	2502	2428	2312	2217	2112
	W16L X 30						1.4	5389	3515	2777	2695	2566	2460	2343
							1.6	5923	3863	3051	2961	2820	2704	2575
420/85R30	W13 X 30	1476	438	636	4428	140D	0.8	3680	2400	1896	1840	1752	1680	1600
	W14L X 30						1.2	4715	3075	2429	2358	2245	2153	2050
	W15L X 30						1.4	5233	3413	2696	2616	2491	2389	2275
							1.6	5750	3750	2963	2875	2738	2625	2500
460/85R30	W14L X 30	1544	475	684	4632	145D	0.8	4269	2784	2199	2134	2032	1949	1856
	W15L X 30						1.2	5469	3567	2818	2735	2604	2497	2378
	W16L X 30						1.4	6070	3959	3127	3035	2890	2771	2639
							1.6	6670	4350	3437	3335	3176	3045	2900

TECHNICAL DETAILS

Size	Rim	Dimension		Static Loaded Radius (mm)	Rolling Circumference (mm)	Load index / PR	Inflation Pressure (bar)	Recommended Load (Kg)						
		OD (mm)	SW (mm)					Tractor Application						
								Static kmph	10 kmph	25 kmph	30 kmph	40 kmph	50 kmph	65 kmph
320/85R32	W9 X 32	1357	329	612	4071	126D	0.8	2502	1632	1289	1251	1191	1142	1088
	W10 X 32						1.2	3206	2091	1652	1603	1526	1464	1394
	W11 X 32						1.4	3558	2321	1833	1779	1694	1624	1547
							1.6	3910	2550	2015	1955	1862	1785	1700
480/70R34	W14L X 34	1580	479	706	4740	143D	0.8	4011	2616	2067	2006	1910	1831	1744
	W15L X 34						1.2	5139	3352	2648	2570	2447	2346	2235
	W16L X 34						1.4	5703	3720	2939	2852	2715	2604	2480
							1.6	6268	4088	3229	3134	2984	2861	2725
420/85R34	W13 X 34	1578	438	705	4734	147D	0.8	3819	2491	1968	1910	1818	1744	1660.5
	W14L X 34						1.6	6082	3967	3134	3041	2896	2777	2645
	W15L X 34						2.0	6648	4336	3425	3324	3165	3035	2891
							2.4	7073	4613	3644	3536	3367	3229	3075
460/85R34	W14L X 34	1646	475	734	4938	147D	0.8	4526	2952	2332	2263	2155	2066	1968
	W15L X 34						1.2	5799	3782	2988	2900	2761	2648	2522
	W16L X 34						1.4	6436	4197	3316	3218	3064	2938	2798
							1.6	7073	4613	3644	3536	3367	3229	3075
320/85R36	W9 X 36	1458	329	612	4374	128D	0.8	2650	1728	1365	1325	1261	1210	1152
	W10 X 36						1.2	3395	2214	1749	1697	1616	1550	1476
	W11 X 36						1.4	3767	2457	1941	1884	1794	1720	1638
							1.6	4140	2700	2133	2070	1971	1890	1800
340/85R36	W11 X 36	1492	353	674	4476	132D	0.8	2944	1920	1517	1472	1402	1344	1280
	W12 X 36						1.2	3772	2460	1943	1886	1796	1722	1640
							1.4	4186	2730	2157	2093	1993	1911	1820
							1.6	4600	3000	2370	2300	2190	2100	2000
480/70R38	W14L X 38	1681	479	755	5043	145D	0.8	4269	2784	2199	2134	2032	1949	1856
	W15L X 38						1.2	5469	3567	2818	2735	2604	2497	2378
	W16L X 38						1.4	6070	3959	3127	3035	2890	2771	2639
							1.6	6670	4350	3437	3335	3176	3045	2900
340/85R38	W11 X 38	1543	353	699	4629	133D	0.8	3032	1978	1562	1516	1444	1384	1318
	W12 X 38						1.2	3885	2534	2002	1943	1850	1774	1689
							1.4	4312	2812	2221	2156	2053	1968	1875
							1.6	4738	3090	2441	2369	2256	2163	2060
420/85R38	W13 X 38	1679	438	754	5037	144D	0.8	4122	2688	2124	2061	1962	1882	1792
	W14L X 38						1.2	5281	3444	2721	2640	2514	2411	2296
	W15L X 38						1.4	5860	3822	3019	2930	2790	2675	2548
							1.6	6440	4200	3318	3220	3066	2940	2800
460/85R38	W14L X 38	1747	475	781	5241	149D	0.8	4784	3120	2465	2392	2278	2184	2080
	W15L X 38						1.2	6130	3998	3158	3065	2918	2798	2665
	W16L X 38						1.4	6802	4436	3505	3401	3238	3105	2958
							1.6	7475	4875	3851	3738	3559	3413	3250

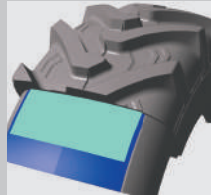


MRF MUSCLEGRIP

FEATURES & BENEFITS



Enhanced sidewall protection with sidewall stiffener.



Robust carcass construction ensures better puncture protection.



Multi-purpose tyre suitable for Agricultural and Industrial applications.
Higher load carrying capacity.
Better stability while on telescopic application.
Superior traction on soft terrain.



TECHNICAL DETAILS

Size	Rim	Dimension		Static Loaded Radius (mm)	Rolling Circumference (mm)	Load index / PR	Inflation Pressure (bar)	Recommended Load (Kg)						Cyclic Load
		OD (mm)	SW (mm)					Constant Load						
								Static kmph	10 kmph	20 kmph	30 kmph	40 kmph	50 kmph	
460/70R24 IND	W14L X 24	1254	455	555	3762	159A8/B	1.6	4738	2575	2245	2142	2060	1875	3090
	W15L X 24						2.4	6440	3500	3052	2912	2800	2548	4200
	W16L X 24						3.2	8165	4438	3870	3692	3550	3231	5325
							4	10063	5469	4769	4550	4375	3981	6563



MRF FARMGRIP FRONT

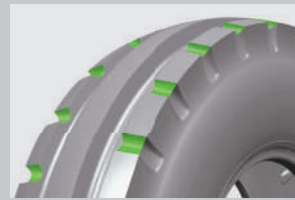
FEATURES & BENEFITS



Multi-rib tread pattern developed for high performance in haulage and field operations.

The continuous centre rib offers superior steering control for all operations.

Deep skid depth for improved tyre life.



The specially designed side ribs ensure better rolling and self-cleaning ability on all soil types.



TECHNICAL DETAILS

Size	Rim	Dimension		Static Loaded Radius (mm)	Rolling Circumference (mm)	Load index / PR	Inflation Pressure (bar)	Recommended Load (Kg)				
		OD (mm)	SW (mm)					Tractor Application				
								Static kmph	10 kmph	25 kmph	30 kmph	40 kmph
6.00-16	4.00E X 16	732	165	342	2196	8PR / 91A8	0.8	502	327	242	234	218
	4.50E X 16						2.1	883	576	426	411	384
	5.00F X 16						3.4	1170	763	565	544	509
							4.7	1415	923	683	658	615
6.50-16	4.00E X 16	761	175	355	2283	8PR / 94A8	0.8	568	371	274	264	247
	4.50E X 16						2.0	972	634	469	452	422
	5.00F X 16						3.2	1279	834	617	595	556
							4.4	1541	1005	744	717	670
7.50-16	5.00 F X 16	805	199	374	2415	8PR / 99A8	0.8	706	460	341	328	307
	5.50F X 16						1.8	1134	740	547	528	493
	6.00F X 16						2.8	1468	958	709	683	638
							3.9	1783	1163	860	829	775
9.00-16	5.50F X 16	855	234	395	2565	10PR / 111A8	0.8	957	624	462	445	416
	6.00F X 16						1.9	1587	1035	766	738	690
							3.0	2074	1352	1001	965	902
	6.50F X 16						4.15	2507	1635	1210	1166	1090



MRF FARMGRIP

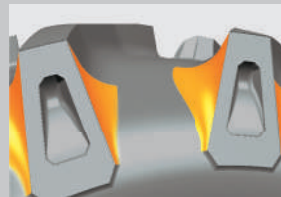
FEATURES & BENEFITS



Premium tread compound for improved cut and chip resistance and extended tyre life.



Enhanced Sidewall protection makes it ideal for farming operation.



Increased padding provided at lug shoulders ensure better stability.



Superior Casing offers higher load carrying capacity and increased casing life.

TECHNICAL DETAILS

Size	Rim	Dimension		Static Loaded Radius (mm)	Rolling Circumference (mm)	Load index / PR	Inflation Pressure (bar)	Recommended Load (Kg)				
		OD (mm)	SW (mm)					Tractor Application				
								Static kmph	10 kmph	25 kmph	30 kmph	40 kmph
9.5-24	W7 X 24 W8 X 24	1050	241	491	3150	8PR / 112A8	0.8	1124	733	543	523	489
							1.4	1560	1017	753	726	678
							2.0	1922	1253	927	894	836
							3.3	2576	1680	1243	1198	1120
11.2-24	W9 X 24 W10 X 24	1105	284	512	3315	8PR / 116A8	0.8	1382	901	667	643	601
							1.5	1996	1301	963	928	868
							2.2	2497	1628	1205	1162	1086
						10PR / 120A8	0.8	1381	901	667	643	601
							1.7	2147	1400	1036	999	933
							2.6	2752	1795	1328	1280	1197
12.4-24	W10 X 24 W11 X 24 DW11 X 24	1160	315	543	3480	8PR / 121A8	0.8	1603	1045	773	746	697
							1.5	2315	1510	1117	1077	1006
							2.2	2896	1889	1398	1347	1259
							2.8	3335	2175	1610	1552	1450
						12PR / 129A8	0.8	1636	1067	789	761	711
							1.9	2713	1770	1309	1262	1180
							3.0	3544	2312	1711	1649	1541
13.6-24	W11 X 24 W12 X 24	1210	345	537	3630	8PR / 123A8	0.8	1922	1253	928	894	836
							1.3	2553	1665	1232	1188	1110
							1.8	3089	2014	1491	1437	1343
							2.3	3565	2325	1721	1659	1550
						12PR / 130A8	0.8	1907	1244	921	887	829
							1.6	2861	1866	1381	1331	1244
							2.4	3627	2366	1751	1687	1577
14.9-24	W13 X 24 DW13 X 24 W12 X 24	1265	378	559	3795	12PR / 136A8	0.8	2290	1493	1105	1065	996
							1.6	3435	2240	1658	1598	1493
							2.4	4354	2840	2101	2026	1893
							3.2	5152	3360	2486	2397	2240
18.4-26	W15 X 26 W16L X 26	1450	467	683	4350	12PR / 146A8	0.8	3463	2258	1671	1611	1505
							1.4	4804	3133	2318	2235	2089
							2.0	5918	3860	2856	2753	2573
							2.6	6900	4500	3330	3210	3000
11.2-28	W9 X 28 W10 X 28	1205	284	564	3615	8PR / 118A8	0.8	1459	951	704	679	634
							1.4	2024	1320	977	942	880
							2.0	2494	1626	1203	1160	1084
							2.8	3036	1980	1465	1412	1320
12.4-28	W10 X 28 W11 X 28	1260	315	590	3780	8PR / 123A8	0.8	1713	1117	827	797	745
							1.4	2377	1550	1147	1106	1033
							2.0	2928	1910	1413	1362	1273
							2.8	3565	2325	1721	1659	1550

TECHNICAL DETAILS

Size	Rim	Dimension		Static Loaded Radius (mm)	Rolling Circumference (mm)	Load index / PR	Inflation Pressure (bar)	Recommended Load (Kg)				
		OD (mm)	SW (mm)					Tractor Application				
								Static kmph	10 kmph	25 kmph	30 kmph	40 kmph
13.6-28	W11 X 28 W12 X 28 DW12 X 28	1310	345	613	3930	8PR / 125A8	0.8	2046	1334	987	952	890
							1.4	2838	1851	1370	1321	1234
							1.8	3288	2144	1587	1530	1430
							2.3	3795	2475	1832	1766	1650
	12PR / 134A8	0.8	2023	1319	976	941	879					
		1.4	2806	1830	1354	1305	1220					
		1.8	3251	2120	1569	1512	1413					
		3.6	4876	3180	2353	2268	2120					
14.9-28	W12 X 24 W13 X 24 DW13 X 24	1365	378	600	4095	8PR / 130A8	0.8	2418	1577	1167	1125	1051
							1.3	3212	2095	1550	1494	1397
							1.8	3886	2534	1875	1808	1690
							2.2	4370	2850	2109	2033	1900
	12PR / 138A8	0.8	2412	1573	1164	1122	1049					
		1.6	3619	2360	1746	1683	1573					
		2.4	4587	2992	2214	2134	1994					
		3.2	5428	3540	2620	2525	2360					
16.9-28	W14L X 28 W15L X 28 DW15L X 28	1435	429	672	4305	12PR / 143A8	0.8	2951	1924	1424	1373	1283
							1.4	4093	2670	1975	1904	1780
							2.2	5332	3478	2573	2481	2318
							2.9	6268	4088	3025	2916	2725
16.9-30	W14L X 30 W15L X 30 DW15L X 30	1485	429	695	4455	12PR / 144A8	0.8	2972	1938	1434	1383	1292
							1.6	4458	2908	2152	2074	1938
							2.4	5652	3686	2728	2629	2457
							3.0	6440	4200	3108	2996	2800
18.4-30	W15 X 30 W16L X 30	1550	467	686	4650	8PR / 139A8	0.8	3596	2345	1735	1673	1564
							1.1	4332	2826	2091	2016	1884
							1.4	4989	3254	2408	2321	2169
							1.7	5589	3645	2697	2600	2430
	12PR / 149A8	0.8	3592	2343	1734	1671	1562					
		1.4	4983	3250	2405	2318	2167					
		2.0	6139	4004	2963	2856	2669					
		2.8	7475	4875	3608	3478	3250					
16.9-34	W14L X 34 W15L X 34 DW15L X 34	1485	429	613	4455	8PR / 125A8	0.8	2046	1334	987	952	890
							1.4	2838	1851	1370	1321	1234
							1.8	3288	2144	1587	1530	1430
							2.3	3795	2475	1832	1766	1650
	12PR / 134A8	0.8	2023	1319	976	941	879					
		1.4	2806	1830	1354	1305	1220					
		1.8	3251	2120	1569	1512	1413					
		3.6	4876	3180	2353	2268	2120					
18.4-34	W15L X 34 W16L X 34 DW16L X 34	1654	467	740	4962	14PR / 153A8	0.8	3874	2527	1870	1802	1685
							1.5	5597	3650	2701	2604	2433
							2.2	7002	4567	3379	3257	3044
							3.0	8395	5475	4052	3906	3650

TECHNICAL DETAILS

Size	Rim	Dimension		Static Loaded Radius (mm)	Rolling Circumference (mm)	Load index / PR	Inflation Pressure (bar)	Recommended Load (Kg)				
		OD (mm)	SW (mm)					Tractor Application				
								Static kmph	10 kmph	25 kmph	30 kmph	40 kmph
12.4-36	W10 X 36 W11 X 36	1465	315	686	4395	8PR / 126A8	0.8	1962	1280	947	913	853
							1.4	2722	1775	1314	1266	1184
							2.0	3354	2187	1619	1560	1458
							2.6	3910	2550	1887	1819	1700
13.6-36	W11 X 36 W12 X 36	1514	345	683	4542	8PR / 129A8	0.8	2294	1496	1107	1067	997
							1.4	3183	2076	1536	1481	1384
							1.8	3687	2404	1779	1715	1603
							2.3	4255	2775	2054	1980	1850
13.6-38	W11 X 38 W12 X 38 DW12 X 38	1565	345	732	4695	8PR / 131A8	0.8	2418	1577	1167	1125	1051
							1.4	3355	2188	1619	1561	1459
							1.8	3886	2534	1875	1808	1690
							2.3	4485	2925	2165	2087	1950
15.5-38	W14L X 38 DW14A X 38	1569	394	709	4707	8PR / 133A8	0.8	2856	1863	1379	1329	1242
							1.4	3963	2584	1913	1844	1723
							1.8	4590	2994	2215	2136	1996
							1.9	4738	3090	2287	2204	2060
						10PR / 137A8	0.8	2852	1860	1376	1327	1240
							1.4	3957	2580	1910	1841	1720
							1.8	4583	2989	2212	2132	1993
							2.3	5290	3450	2553	2461	2300
18.4-38	W15 X 38 W16L X 38	1755	467	785	5265	8PR / 143A8	0.8	4033	2630	1946	1876	1753
							1.1	4858	3169	2345	2260	2112
							1.4	5595	3649	2700	2603	2432
							1.7	6268	4088	3025	2916	2725
						12PR / 152A8	0.8	3387	2209	1635	1576	1473
							1.4	4699	3065	2268	2186	2043
							1.8	5443	3550	2627	2532	2367
							3.6	8165	5325	3941	3799	3550



MRF TYRES FINLAND OY

Sami Kivioja
+358 50 441 6210
myynti@mrftyresfinland.fi

www.mrftyresfinland.fi **f** / **mrftyresfinland** **@** / **mrftyresfinland**

Technical specifications, features are subject to change without prior notice. Images used are for representative purpose only.
Accessories shown may not be a part of standard product. Actual colors may vary. E & O.E.